

Done Right and Documented

Tips for Successful IR-4 Trials



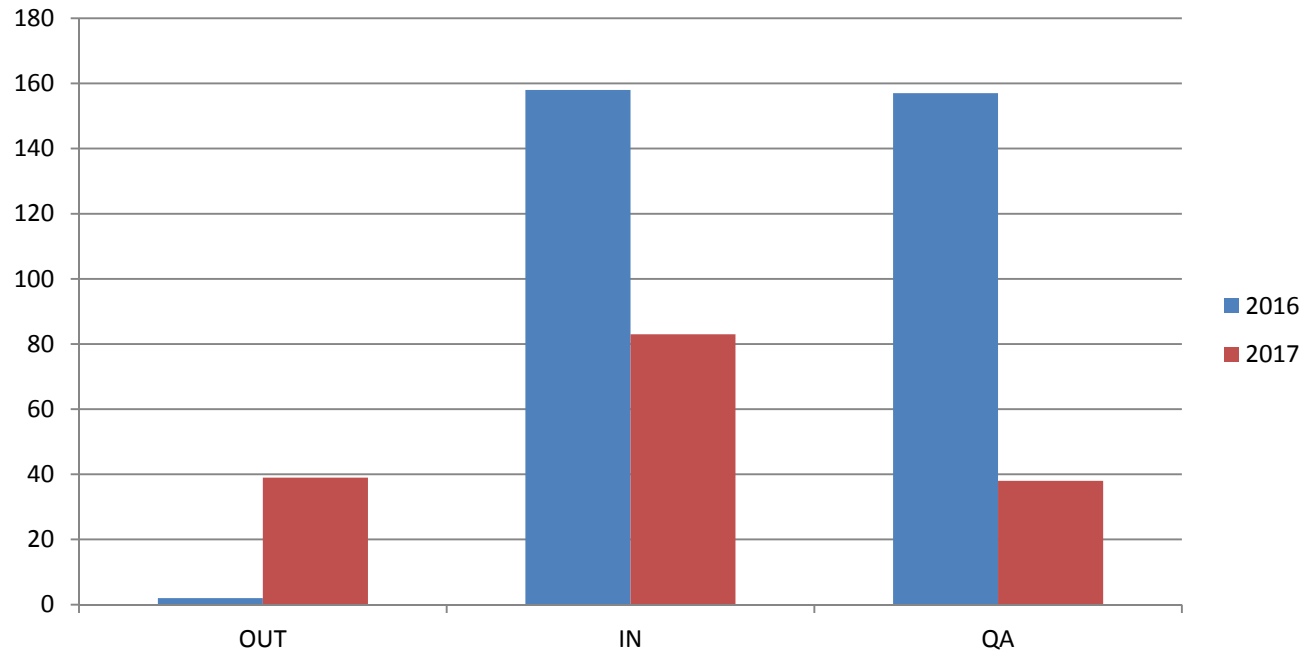
Welcome New WR Regional Field Coordinator

Michael Horak, PhD



(530) 752-7634
mjhorak@ucdavis.edu

Field Data Notebook Status in the Western Region



2016

- 158/160 received by RFC Office - 99%
- 157/160 off to QA - 98%

2017

- 83/160 received by RFC Office - 52%
- 38/160 off to QA - 24%

It's not done until responses to eQA are complete and SD signs off!

Field Critical Phase Inspections

QA needs to observe test substance measuring

- Correct chemical
- GLP characterization
- Label requirements
- Calculations
- Measuring technique
- Documentation



Early Trials

- Call or email QA if you have early trials!
- QA planning meeting late February



Canadian Trials

1. Appendix A – GLP Acceptance

Like signed protocol
letter in IR-4 trials

Found at end of
protocol

Sign and return to RFC

Bicyclopyrone/Onion (dry bulb)
ID No. AAFC16-055R-262
Leach

Page 17 of 17

AAFC PESTICIDE RESIDUE STUDY PLAN
BICYCLOPYRONE: MAGNITUDE OF THE RESIDUE ON DRY BULB ONION
STUDY #: AAFC16-055R

APPENDIX A
GLP Acceptance Form

Trial ID #: AAFC16-055R-(XXX) 262 (add unique 3-digit number)

I acknowledge that I have read, and understood, the material contained in the assigned sections of this Study Plan. The research will be conducted in accordance with this Study Plan and the OECD GLP Principle of Good Laboratory Practices (revision 1997). Any work conducted in the USA will be conducted according to EPA Good Laboratory Practice standards, 40 CFR part 160, amended as effective Oct 16, 1989, which are acceptable to OECD standards. In addition, I will cooperate with the Quality Assurance Personnel in scheduling needed inspections and documenting responses to QA audit reports.

Principal Investigator (PI):

Nathan Leach Nathan Leach 3-4-16
Printed Name Signature Date

Acknowledged by Test Site Manager:

Rebecca Sisco Rebecca Sisco 3-11-16
Printed Name Signature Date

The following Individual or Company will be responsible for the Quality Assurance for this trial

Western Bean Quality Assurance Unit
Name of Quality Assurance (Print)
Martin Beran or Sherita Narmington

Form Completion and Return Instructions: At a minimum, the PI is to sign this form prior to performing any experimental work. Once the form has been completed, a true copy of the form needs to be sent to the individual identified below and copied to the Study Director and the original retained in the RDFN, or lab raw data by the PI.

GLP Admin
AAFC Minor Use Pesticide Program
Building 57, Central Experimental Farm
960 Carling Avenue
Ottawa, ON, Canada
K1A 0C6
Fax: 613-759-1400
Email: GLPArchivist@agr.gc.ca

Canadian Trials

2. Tracking Form

In Section 1 of notebook

Tracks anticipated critical dates like IR-4 signed protocol letter

Fill out and send to RFC

Leave RDFN shipped to QA completion date and initials/date blank – RFC office enters those

TRIAL TRACKING FORM

Ethaboxam / Pea (Dry)
ID No. AAFC16-044R-126
Meeks

INSTRUCTIONS: This form is used to keep the Study Director (SD) and Quality Assurance (QA) informed of anticipated and completion dates for the listed activities. Scan and email this form to the SD and QA when **all** anticipated activities have been scheduled. Scheduled dates can be changed in the future if needed, but should be communicated to the SD and QA if significant changes occur (more than one week). After the first application is completed, scan and email this form to the SD, or simply email the SD within 48 hours to inform that the activity was completed. The same should be done once all the samples have been collected.

Study Director Name: Chuck Chen

Activity	Anticipated date	Initials & date	Completion date	Initials & date
Test Item received			4-4-16	WM/4-4-16
Trial site established	4-13-16	WM/4-13-16	4-13-16	WM/4-13-16
Test Item applied (App. #)	1 4-13-16	WM/4-13-16	4-13-16	WM/4-13-16
	2			
	3			
	4			
	5			
	6			
Hag Vine Dry seed Samples collected	1 6-15-16	WM/4-13-16	6-27-16	WM/6-27-16
	2 6-25-16	WM/4-13-16	6-28-16	WM/6-28-16
	3 7-15-16	WM/4-13-16	7-27-16	WM/7-27-16
	4			
	5			
	6			
Samples shipped to Lab	9-15-16	WM/4-13-16	10-4-16	WM/10-4-16
RDFN shipped to QA	11-15-16	WM/4-13-16	2-15-17	WM/2-15-17

Leave blank

Version 2014

Section 1, Page 3

COMPLETE IF APPROPRIATE: "THIS IS A TRUE COPY OF THE ORIGINAL"

THE ORIGINAL IS LOCATED: _____ INITIALS _____ DATE _____

GLP Compliance Statement

Sign after the notebook is complete and samples shipped and received

GLP Compliant			DATA CATEGORY
YES	NO	NA ¹	FIELD PERSONNEL SHOULD NOT LINE OUT BLANK CELLS ON THIS PAGE
	X		Weather, irrigation, and soil characterization data are not required by the protocol to be compliant with GLP's and are noted as non-compliant in the final report for the study.
	X		TEST SITE HISTORY (chemical applications prior to the trial year) (FDB Part 5)
	X		CULTURAL PRACTICES (dating back to harvest of the previous crop), MAINTENANCE FERTILIZERS AND PESTICIDES (current trial year) (FDB Part 5)
In U.S. trials, GLP-compliant equipment must comply with 40 CFR 160, Subpart D, which includes 160.81 (b) (11). Adjuvants in U.S. trials must comply with 40 CFR 160.83.			
		X	ADJUVANT LABELING AND RECEIPT INFORMATION (check missing items): Receipt of the adjuvant at the field facility (usually the purchase date): _____ Identity and concentration of the adjuvant (on the adjuvant label): _____ Recommended storage conditions (on the adjuvant label): _____ Expiration date (if not on the label, then assigned by field personnel): _____
X			ENVIRONMENTAL MONITORING DEVICES for test substance storage (FDB Part 4)
		X	GLOBAL POSITIONING DEVICE used to determine plot location (FDB Part 5)
		X	FLOW METERS and similar SPRAYER OUTPUT CALIBRATION EQUIPMENT used to <u>measure</u> water (excluding marked, calibrated beakers, graduated cylinders or flasks suitable for scientific research) (FDB Part 6)
	X		pH METER or STRIP for measuring the acidity of the carrier (water) (FDB Part 6)
	X		RESIDUE SAMPLE WEIGHING EQUIPMENT (FDB Part 7)
X			ENVIRONMENTAL MONITORING DEVICES for sample storage (FDB Part 7)
List below additional <i>non</i> -compliant items (additional pages may be used for more items)			

¹"NA" should be checked for equipment that was not used in this trial and if adjuvants were not used.

David E. ...

SIGNATURE OF FIELD RESEARCH DIRECTOR

PART 1 PAGE 3

10-30-17

DATE

Trial Year 2017

Test Substance Transport

Use Blue Ice!

It can get very hot in an enclosed truck (or in the back of the truck)



Collecting Crop Safety Data

Prometryn/Pepper (Bell & Nonbell)
ID No. 12036.17-CA118
Ennes

Field ID No. _____

① wrong date
OK 7-21-17

Timing	TRT No.	Evaluation Scale ¹	Type of Injury (stem and foliage burn, chlorosis, leaf cupping or twisting, etc.)	Int./Date
Early Season	1	0	None	OK 6-14-17
	2	0	None	OK 6-14-17
	3	0	None	OK 6-14-17
Mid-Season	1	0	None	OK 7-21-17
	2	0	None	OK 7-21-17
	3	0	None	OK 7-21-17
Prior to Harvest	1	0	None	OK 8-17-17
	2	0	None	OK 8-17-17
	3	0	None	OK 8-17-17

Note: Specific dates and specific numerical ratings that correspond with the protocol requirements.

Collecting Crop Safety Data

Halosulfuron-Methyl/Stevia
ID No. 12049.17-CA120
Watkins

FIELD ID NO: _____

IR-4 FIELD DATA BOOK

PART 6. APPLICATION RECORDS

K. POST TREATMENT RECORDS FOR APPLICATION NUMBER 1

APPLICATION DATE 7/27/2017 (Complete a separate form for each application date)

Was There Any Visible Phytotoxicity Damage? (Check one) YES ☒ NO ☐

Date Crop Was Observed: 8/17/2017 Initials/date: S.W. 8/17/2017

If YES, then contact the Study Director, fill in the box below, and if a digital camera is available, email digital photograph(s) to the Study Director along with a detailed explanation of the damage. If NO, then line out the entire box with initials and date.

DESCRIPTION OF PHYTOXICITY SYMPTOMS:	
<u>Chlorosis and necrotic spots on some lower leaves.</u>	
<u>Plants are vigorous and growing out of injury. Similar in</u>	
<u>size to untreated.</u>	
PHYTOTOXICITY DESCRIBED BY: <u>S.W. 8/17/17</u> (Initials/date)	
DATE STUDY DIRECTOR WAS CONTACTED: <u>8/17/17</u> CONTACTED BY: <u>S.W. 8/17/17</u> (Initials/date)	

Note: Specific dates and description, along with photo

Halosulfuron-Methyl/Stevia
ID No. 12049.17-CA120
Watkins

S. W.
8/21/17



Fluridone / Sweet Potato
ID No. 11775.17-CA45

FIELD ID NO: _____ Skiles

IR-4 FIELD DATA BOOK

PART 6. APPLICATION RECORDS

K. POST TREATMENT RECORDS FOR APPLICATION NUMBER 1

APPLICATION DATE 4-26-17 (Complete a separate form for each application date)

Was There Any Visible Phytotoxicity Damage? (Check one) YES ☒ NO ☐

Date Crop Was Observed: 5-15-17 Initials/date: B 5-15-17

If YES, then contact the Study Director, fill in the box below, and if a digital camera is available, email digital photograph(s) to the Study Director along with a detailed explanation of the damage. If NO, then line out the entire box with initials and date.

DESCRIPTION OF PHYTOXICITY SYMPTOMS:	Some of the plants in T1002 are turning brown and some plants are dead. T1001 plants are all growing normal.
PHYTOTOXICITY DESCRIBED BY:	B 5-15-17 (Initials/date)
DATE STUDY DIRECTOR WAS CONTACTED:	5-15-17 CONTACTED BY: B 5-15-17 (Initials/date)

Trial ID 11775.17-CA45 Fluridone/Sweet potato TRT01



Trial ID 11775.17-CA45 Fluridone/Sweet Potato TRT02 Application 4/26/17 plant date 4/27/17



Plot Maps

Must be completed and in the notebook before any applications are done.

Clethodim / Chia
ID No. 11672.16-OR307
Sturman

FIELD ID NO: _____

IR-4 FIELD DATA BOOK

PART 5. TRIAL SITE INFORMATION:

C.2. PLOT PLAN

DATE OF PLOT LAYOUT 7/15/16 PERFORMED BY PWJ SOP UTILIZED 30-1.5

Are there adjacent plots treated with test substances as described in part 5.C.1? YES _____ NO ✓

If YES, when was the adjacent plot information added to this map? Date NA Initials RA

If a global position system (GPS) was used for plot location, enter GPS-related SOP/revision# used NA

INCLUDE DIMENSIONS FOR EACH PLOT IN THIS TRIAL

Gravel Roadways

North
0% slope

48' 19' 39' 86.0' 46.5' 133.0' 143.5'

11672.16-OR307
Clethodim
TAT 02

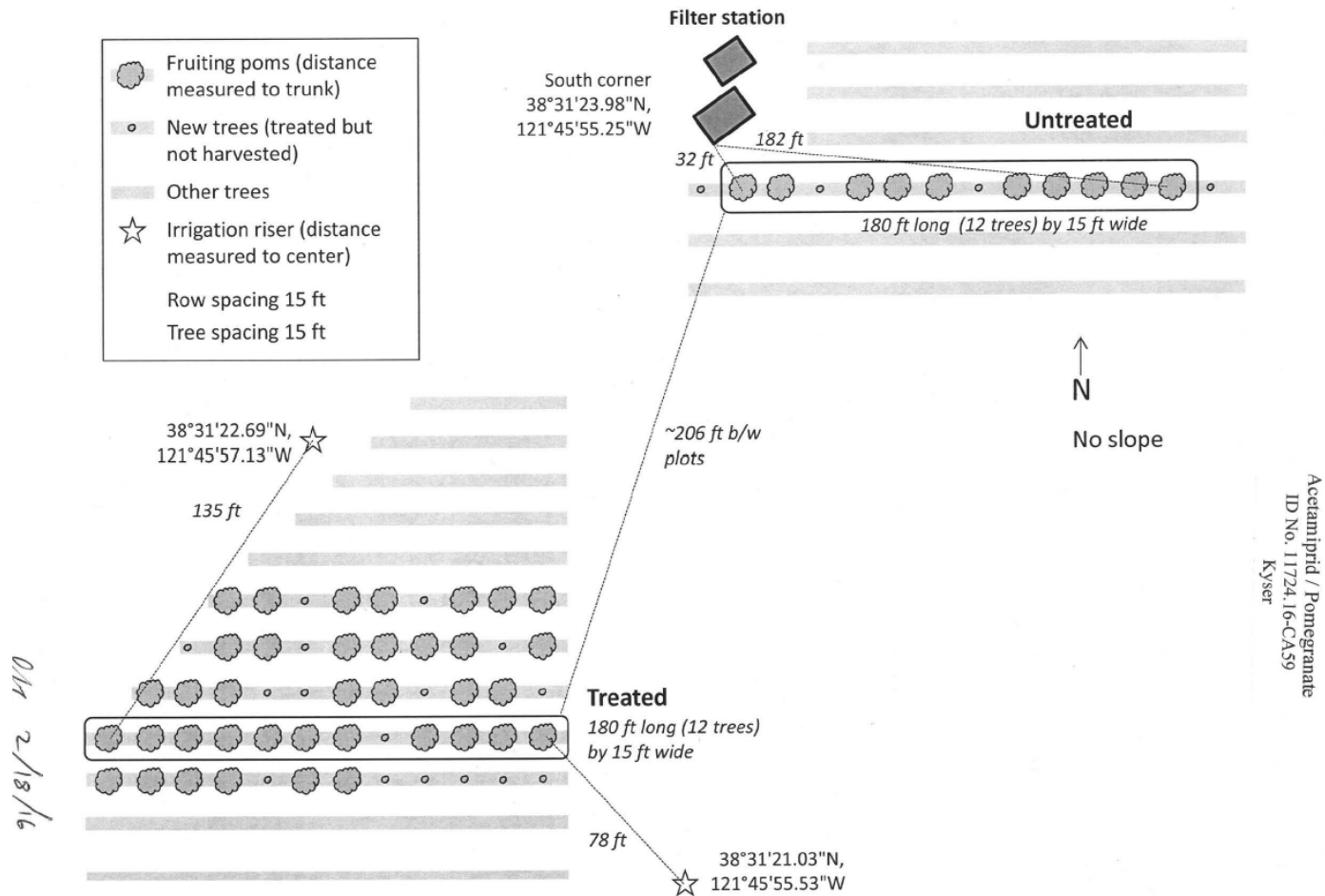
Hydrant

11672.16-OR307
Clethodim
TAT 01

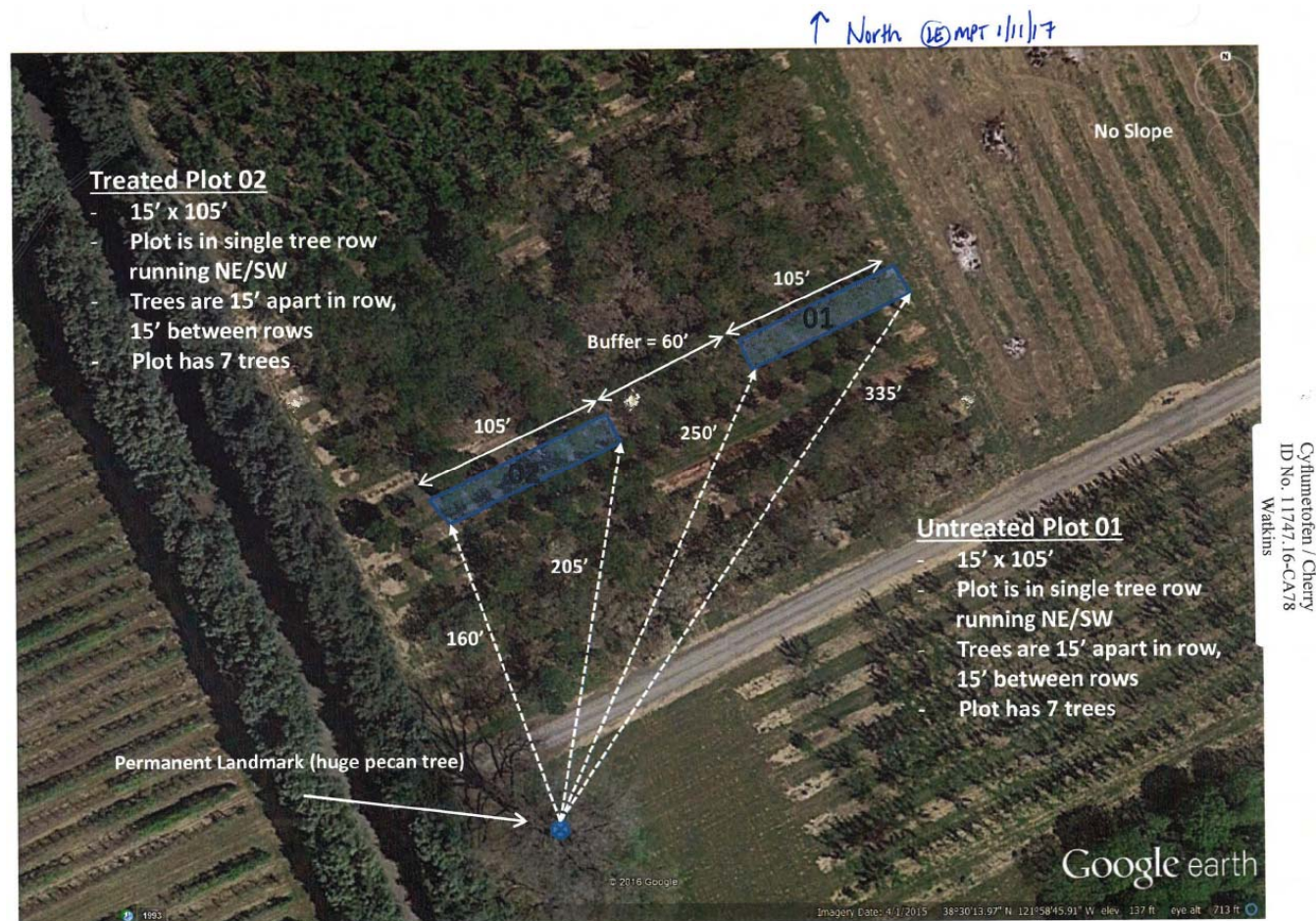
35' 19' 35'

Plant rows run N-S
16 rows/plot
Prevailing wind from the north

Plot Map Examples



Plot Map Examples



wrir4.ucdavis.edu/FoodUse/2018-Labels.html



2018 Labels & SDS Documents

Field Research Centers:

[KARE-Ennes & Skiles](#)

[NMSU-Hamilton](#)

[OSU-Koskela & Sturman](#)


[UCD-Kyser & Watkins](#)

[UCR-Leach](#)

[UH-Coughlin & Kam](#)


[UI-Meeks](#)

[WSU-Peng](#)

Western Region Priority Setting Tool 						
2018 Label-SDS-KARE						
Researcher	TestSubstance	TradeName	EPA-CautionWord	LABEL	SDS	PPE
KARE	AZOXYSTROBIN + FLUDIOXONIL + DIFENOCONAZOLE	Stadium	III-CAUTION	LABEL	SDS	Mixers, loaders, applicators and all other handlers must wear: • Long-sleeved shirt and long pants • Socks and shoes • Waterproof gloves
KARE	BENZOVINDFLUPYR + DIFENOCONAZOLE	Aprovia Top	II-WARNING	LABEL	SDS	Personal Protective Equipment (PPE) Applicators and other handlers must wear: - Long-sleeved shirt and long pants - Shoes plus socks - Protective eyewear (goggles, face shield, or safety glasses) - Chemical-resistant gloves (barrier laminate, butyl rubber >= 14 mils, nitrile rubber >= 14 mils, neoprene rubber >= 14 mils, natural rubber >= 14 mils, polyethylene, polyvinyl chloride (PVC) >= 14 mils or Viton® >= 14 mils).
KARE	BIFENAZATE	Acramite	III-CAUTION	LABEL	SDS	PERSONAL PROTECTIVE EQUIPMENT (PPE) Applicators and other handlers must wear: - Protective eyewear - Long-sleeved shirt and long pants - Shoes plus socks - Waterproof gloves made of barrier laminate, polyethylene, butyl rubber (>= 14 mils), nitrile rubber (>= 14 mils), neoprene rubber (>= 14 mils), natural rubber (>= 14 mils), polyvinyl chloride (>= 14 mils, or viton (>= 14 mils). Follow manufacturer's instructions for cleaning and maintaining PPE. If no such instructions for washables exist, use detergent and hot water. Keep and wash PPE separately from other laundry.
KARE	CYANTRANILPROLE (HW86)	Exirel	III-CAUTION	LABEL	SDS	Applicators and other handlers must wear: Long-sleeved shirt and long pants. Chemical resistant gloves Category A (such as butyl rubber, natural rubber, neoprene rubber, or nitrile rubber), all > 14 mils. Shoes plus socks. After the product has been diluted in accordance with label directions for use, shirt, pants, socks, and shoes are sufficient Personal Protective Equipment. Follow manufacturer's instructions for cleaning/maintaining personal protective equipment (PPE). If no such instructions for washables are available, use detergent and hot water. Keep and wash PPE separately from other laundry.
KARE	CYCLANILPROLE	Harvanta	III-CAUTION	LABEL	SDS	Applicators and other handlers must wear: Long-sleeved shirt and long pants. Chemical resistant gloves Category A (such as butyl rubber, natural rubber, neoprene rubber, or nitrile rubber), all > 14 mils. Shoes plus socks. After the product has been diluted in accordance with label directions for use, shirt, pants, socks, and shoes are sufficient Personal Protective Equipment. Follow manufacturer's instructions for cleaning/maintaining personal protective equipment (PPE). If no such instructions for washables are available, use detergent and hot water. Keep and wash PPE separately from other laundry.
KARE	ETHALFLURALIN	Sonalan 10g	I-DANGER	LABEL	SDS	Personal Protective Equipment (PPE) Applicators and other handlers must wear: - Long-sleeved shirt and long pants - Chemical-resistant gloves made of any waterproof material - Shoes plus socks - Protective eyewear Follow manufacturer's instructions for cleaning/maintaining PPE. If no such instructions for washables, use detergent and hot water. Keep and wash PPE separately from other laundry.
KARE	FAMOXADONE + CYMOXANIL	Tanos	III-CAUTION	LABEL	SDS	Applicators and other handlers must wear: Long-sleeved shirt and long pants. Chemical Resistant Gloves Category A (such as butyl rubber, natural rubber, neoprene rubber, or nitrile rubber), all >= 14 mils. Shoes plus socks. Follow manufacturer's instructions for cleaning/maintaining personal protective equipment (PPE). If no such instructions for washables, use detergent and hot water. Keep and wash PPE separately from other laundry.
KARE	FLONICAMID	Beleaf	III-CAUTION	LABEL	SDS	Personal Protective Equipment (PPE) Applicators and other handlers must wear: long-sleeved shirt and long pants, shoes plus socks, and waterproof gloves. Follow manufacturers instructions for cleaning/maintaining PPE. If there are no such instructions for washables, use detergent and hot water. Keep and wash PPE separately from other laundry. When handlers use closed systems, enclosed cabs or aircraft in a manner that meets the requirements listed in the Worker Protection Standard (WPS) for agricultural pesticides [40 CFR 170.240(d)(4-6)], the handler PPE requirements may be reduced or modified as specified in the WPS.
KARE	FLUAZINAM	Omega	II-WARNING	LABEL	SDS	Applicators, flaggers, and other handlers must wear: - Coveralls worn over long-sleeved shirt and long pants - Socks and chemical resistant footwear - Chemical resistant gloves made of any waterproof material such as polyethylene or polyvinyl chloride. - Protective eyewear When mixing

UCR	FLUAZINAM	Omega	II-WARNING	LABEL	SDS	Applicators, flaggers, and other handlers must wear: - Coveralls worn over long-sleeved shirt and long pants - Socks and chemical resistant footwear - Chemical resistant gloves made of any waterproof material such as polyethylene or polyvinyl chloride - Protective eyewear When mixing and loading, or when cleaning equipment, also wear a chemical resistant apron. Remove PPE immediately after handling this product. Wash the outside of gloves before removing. As soon as possible, wash thoroughly and change into clean clothing. Do not allow contact of contaminated clothing with unprotected skin. Discard clothing and other absorbent materials that have been drenched or heavily contaminated with this product's concentrate. Do not reuse them. Follow manufacturer's instructions for cleaning/maintaining PPE. If no such instructions for washables, use detergent and hot water. Keep and wash PPE separately from other laundry.
UCR	FLUTIANIL	Gatten		NoData	NoData	
UCR	GLUFOSINATE	Rely	II-WARNING	LABEL	SDS	Applicators and other handlers must wear: Long sleeved shirt and long pants; chemical-resistant gloves such as barrier laminate, butyl rubber >=14 mils, nitrile rubber >=14 mils, neoprene rubber >=14 mils, polyvinyl chloride (PVC) >=14 mils, or Viton(R)>=14 mils; shoes and socks; protective eyewear (goggles, face shield or safety glasses). Wear a chemical resistant apron when mixing/loading and cleaning equipment. Discard clothing and other absorbent materials that have been drenched or heavily contaminated with this product's concentrate. Do not reuse them. Follow manufacturer's instructions for cleaning/maintaining PPE. If no such instructions for washables exist, use detergent and hot water. Keep and wash PPE separately from other laundry. Mixers/loaders supporting aerial applications must wear a dust/mist filtering respirator (MSHA/NIOSH approval number prefix TC-21C), or a NIOSH approved respirator with any N, R, P or HE filter.
UCR	INDOXACARB	Avaunt	III-CAUTION	LABEL	SDS	Applicators and other handlers must wear: Long-sleeved shirt and long pants. Chemical Resistant Gloves Category A (such as butyl rubber, natural rubber, neoprene rubber or nitrile rubber), all >= 14 mils. Shoes plus socks. Follow manufacturer's instructions for cleaning/maintaining personal protective equipment (PPE). If no such instructions for washables, use detergent and hot water. Keep and wash PPE separately from other laundry. When handlers use closed systems, enclosed cabs, or aircraft in a manner that meets the requirements listed in the Worker Protection Standard (WPS) for agricultural pesticides (40 CFR 170.240(d)(4-6)), the handler PPE requirements may be reduced or modified as specified in the WPS. IMPORTANT: when reduced PPE is worn because a closed system is being used, handlers must be provided all PPE specified above for applicator and other handlers and have such PPE immediately available for use in an emergency, such as a spill or equipment breakdown.
UCR	NMG787			NoData	NoData	
UCR	SULFENTRAZONE	Spartan	III-CAUTION	LABEL	SDS	Personal Protective Equipment (PPE) (4.2) Applicators and other handlers must wear: long-sleeved shirt and long pants, chemical-resistant gloves made of any waterproof material such as polyethylene or polyvinyl chloride, and shoes plus socks. Discard clothing and other absorbent materials that have been drenched or heavily contaminated with this product. Do not reuse them. Follow manufacturer's instructions for cleaning/maintaining PPE. If no such instructions for washables, use detergent and hot water. Keep and wash PPE separately from other laundry.
UCR	TEBUCONAZOLE	Folicur	III-CAUTION	LABEL	SDS	Applicators and other handlers must wear: long sleeve shirts and long pants, chemical-resistant gloves, such as barrier laminate, or butyl rubber or nitrile rubber or neoprene rubber or polyvinyl chloride or viton. Shoes plus socks.

Labels/SDS In Notebooks



DuPont™ Exirel®
INSECT CONTROL
WITH THE ACTIVE INGREDIENT CYAZYPYR®

GROUP	28	INSECTICIDE
<p>For foliar applications to brassica, bulb, cucurbit, fruiting, leafy, legume (except soybeans), root and tuberous and corn vegetables, commercially grown greenhouse cucumber, eggplant, pepper and tomato; cotton, oil seed crops, strawberries; bushberries; peanuts; citrus, pome, and stone fruits; tree nuts; and tobacco for pest management of sucking and chewing insects that can vector certain plant diseases, aiding in optimization of the crop's potential.</p>		

Active Ingredient	By Weight
Cyazypyr	10.20%
3-bromo-1-(3-chloro-2-pyridinyl)-N-(4-cyano-2-methyl-6-((methylamino)carbonyl)phenyl)-1H-pyrazole-5-carboxamide	89.80%

Other Ingredients
TOTAL 100.00%

EXIREL® is a suspension (oil in water emulsion). SHAKE WELL BEFORE USING.
Contains 0.83 lb. active ingredient per gallon.
EPA Reg. No. 352-859
Nonrefillable Container
Net: _____
OR
Refillable Container
Net: _____
E. I. du Pont de Nemours and Company
Chestnut Run Plaza, 974 Centre Road
Wilmington, DE 19805
Phone: 1-800-441-7515 (Toll Free)

Not for sale, sale into, distribution and/or use in Nassau and Suffolk counties of New York State.

KEEP OUT OF REACH OF CHILDREN
CAUTION

Si usted no entiende la etiqueta, busque a alguien para que se la explique a usted en detalle. (If you do not understand the label, find someone to explain it to you in detail.)

FIRST AID

IF ON SKIN: Take off contaminated clothing. Rinse skin immediately with plenty of water for 15-20 minutes. Call a poison control center or doctor for treatment advice.

IF IN EYES: Hold eye open and rinse slowly and gently with water for 15-20 minutes. Remove contact lenses, if present, after the first 5 minutes, then continue rinsing. Call a poison control center or doctor for treatment advice.

For questions regarding emergency medical treatment, you may contact 1-800-441-3637 for information.

PRECAUTIONARY STATEMENTS
HAZARDS TO HUMANS AND DOMESTIC ANIMALS

CAUTION! Causes moderate eye irritation. Avoid contact with eyes, skin or clothing. Prolonged or frequently repeated skin contact may cause allergic reactions in some individuals.

PERSONAL PROTECTIVE EQUIPMENT

Applicators and other handlers must wear:
Long-sleeved shirt and long pants.
Chemical resistant gloves Category A (such as butyl rubber, natural rubber, neoprene rubber, or nitrile rubber), all > 14 mils.
Shoes plus socks.

After the product has been diluted in accordance with label directions for use, shirt, pants, socks, and shoes are sufficient Personal Protective Equipment. Follow manufacturer's instructions for cleaning/maintaining personal protective equipment (PPE). If no such instructions for washables are available, use detergent and hot water. Keep and wash PPE separately from other laundry.

USER SAFETY RECOMMENDATIONS

USERS SHOULD: Wash hands before eating, drinking, chewing gum, using tobacco or using the toilet. Remove clothing immediately if pesticide gets inside. Then wash thoroughly and put on clean clothing.

PHYSICAL OR CHEMICAL HAZARDS

Do not place product near or allow product to come into contact with strong oxidizing substances (such as potassium permanganate) since a hazardous chemical reaction may occur.


ENVIRONMENTAL HAZARDS

This pesticide is toxic to aquatic invertebrates and oysters. Do not apply directly to water. Drift and runoff may be hazardous to aquatic organisms in water adjacent to use sites. This product is highly toxic to bees exposed to direct treatment on blooming crops or weeds. Do not apply this product or allow it to drift to blooming crops or weeds if bees are foraging the treatment area.


Surface Water Advisory:
This product may impact surface water quality due to runoff of rain water. This is especially true for poorly draining soils and soils with shallow ground water. This product is classified as having high potential for reaching surface water via runoff for several weeks after application. A level, well-maintained vegetative buffer strip between areas to which this product is applied and surface water features such as ponds, streams, and springs will reduce the potential loading of cyazypyr from runoff water and sediment. Runoff of this product will be reduced by avoiding applications when rainfall is forecasted to occur within 48 hours.

Ground Water Advisory:
This chemical has properties and characteristics associated with chemicals detected in ground water. This chemical may leach into ground water if used in areas where soils are permeable, particularly where the water table is shallow.

PROTECTION OF POLLINATORS



APPLICATION RESTRICTIONS EXIST FOR THIS PRODUCT BECAUSE OF RISK TO BEES AND OTHER INSECT POLLINATORS. FOLLOW APPLICATION RESTRICTIONS FOUND IN THE DIRECTIONS FOR USE TO PROTECT POLLINATORS.



Look for the bee hazard icon in the Directions for Use for each application site for specific use restrictions and instructions to protect bees and other insect pollinators.

This product can kill bees and other insect pollinators.

Bees and other insect pollinators will forage on plants when they flower, shed pollen, or produce nectar.

Bees and other insect pollinators can be exposed to this pesticide from:

- Direct contact during foliar applications, or contact with residues on plant surfaces after foliar applications
- Ingestion of residues in nectar and pollen resulting from foliar applications.

When Using This Product Take Steps To:

- Minimize exposure of this product to bees and other insect pollinators when they are foraging on pollinator attractive plants in and around the application site.
- Minimize drift of this product on to beehives or to off-site pollinator attractive habitat. Drift of this product onto beehives or off-site to pollinator attractive habitat can result in bee kills.

Information on protecting bees and other insect pollinators may be found at the Pesticide Environmental Stewardship website at: <http://pesticidestewardship.org/PollinatorProtection/Pages/default.aspx>.

Pesticide incidents (for example, bee kills) should immediately be reported to the state/tribal lead agency. For contact information for your state, go to: www.aapco.org/officials.html. Pesticide incidents should also be reported to the National Pesticide Information Center at: www.npic.orst.edu or directly to EPA at: beekill@epa.gov

Safety Data Sheet



Exirel® 100SE

Version 2.1

Revision Date 09/12/2016

Ref. 130000050443

This SDS adheres to the standards and regulatory requirements of the United States and may not meet the regulatory requirements in other countries.

SECTION 1. PRODUCT AND COMPANY IDENTIFICATION

Product name	Exirel® 100SE
Trade name/Synonym	DPX-HGW86 100 SE Cyantranilprole 100 g/SE Cyazypyr® 100 SE DuPont® DPX-HGW86 10 SE Insect Control DPX-HGW86 10 SE Cyazypyr® 10 SE Cyantranilprole: 3-bromo-1-(3-chloro-2-pyridinyl)-N-(4-cyano-2-methyl-6-[[methylamino]carbonyl]phenyl)-1H-pyrazole-5-carboxamide
Product Use	Insecticide
Restrictions on use	Do not use product for anything outside of the above specified uses.
Manufacturer/Supplier	DuPont 974 Centre Road Wilmington, DE 19805, USA
Product Information	1-800-441-7515 (outside the U.S. 1-302-774-1000)
Medical Emergency	1-800-441-3637 (outside the U.S. 1-302-774-1139)
Transport Emergency	CHEMTREC: +1-800-424-9300 (outside the U.S. +1-703-527-3887)

SECTION 2. HAZARDS IDENTIFICATION

Product hazard category	
Skin irritation	Category 2
Skin sensitisation	Category 1

1 / 13

Safety Data Sheet



Exirel® 100SE

Version 2.1

Revision Date 09/12/2016

Ref. 130000050443

Label content
Pictogram



Signal word

Warning

Hazardous warnings

Causes skin irritation.
May cause an allergic skin reaction.

Hazardous prevention
measures

Avoid breathing dust/ fume/ gas/ mist/ vapours/ spray.
Wash skin thoroughly after handling.
Contaminated work clothing should not be allowed out of the workplace.
Wear protective gloves.
IF ON SKIN: Wash with plenty of soap and water.
If skin irritation or rash occurs: Get medical advice/ attention.
Take off contaminated clothing and wash before reuse.
Dispose of contents/ container to an approved waste disposal plant.

Other hazards

Information presented in Section 2 conforms to the requirements of the Occupational Safety and Health Administration (OSHA) Hazard Communication Standard of 2012. See Section 15 for applicable information conforming to the requirements of the Federal Insecticide Fungicide and Rodenticide Act (FIFRA), as required by the US Environmental Protection Agency (EPA), or by state Regulatory Agencies.

2 / 13

Safety Data Sheet



Exirel® 100SE

Version 2.1

Revision Date 09/12/2016

Ref: 130000050443

SECTION 3. COMPOSITION/INFORMATION ON INGREDIENTS

Component	CAS-No.	Concentration
Cytraniliprole	736994-63-1	10.2 %
Alkyl Sulfonate Salt		1 - 5 %
Other Ingredients		83.8 - 88.8 %

The specific chemical identity and/or exact percentage (concentration) of composition has been withheld as a trade secret.

SECTION 4. FIRST AID MEASURES

General advice : Have the product container or label with you when calling a poison control center or doctor, or going for treatment. For medical emergencies involving this product, call toll free 1-800-441-3637. See Label for Additional Precautions and Directions for Use. Information presented in Section 4 conforms to the requirements of the Occupational Safety and Health Administration (OSHA) Hazard Communication Standard of 2012. See Section 15 for applicable information conforming to the requirements of the Federal Insecticide Fungicide and Rodenticide Act (FIFRA), as required by the US Environmental Protection Agency (EPA), or by state Regulatory Agencies.

Inhalation : Move to fresh air. If person is not breathing, call 911 or an ambulance, then give artificial respiration, preferably mouth-to-mouth, if possible. Call a poison control center or doctor for treatment advice.

Skin contact : Take off all contaminated clothing immediately. Rinse skin immediately with plenty of water for 15-20 minutes. Call a poison control center or doctor for treatment advice.

3 / 13

Safety Data Sheet



Exirel® 100SE

Version 2.1

Revision Date 09/12/2016

Ref: 130000050443

Eye contact

Hold eye open and rinse slowly and gently with water for 15-20 minutes. Remove contact lenses, if present, after the first 5 minutes, then continue rinsing eye. Call a poison control center or doctor for treatment advice.

Ingestion

No specific intervention is indicated as the compound is not likely to be hazardous. Consult a physician if necessary.

Most important symptoms/effects, acute and delayed
Protection of first-aiders
Notes to physician

No applicable data available.

No applicable data available.

No applicable data available.

SECTION 5. FIREFIGHTING MEASURES

Suitable extinguishing media : Water spray, Foam, Dry chemical, Carbon dioxide (CO₂)

Unsuitable extinguishing media : High volume water jet, (contamination risk)

Specific hazards : The product is not flammable.

Special protective equipment for firefighters : In the event of fire, wear self-contained breathing apparatus. Use personal protective equipment.

Further information : (on small fires) If area is heavily exposed to fire and if conditions permit, let fire burn itself out since water may increase the area contaminated. Cool containers/tanks with water spray.

SECTION 6. ACCIDENTAL RELEASE MEASURES

NOTE: Review FIRE FIGHTING MEASURES and HANDLING (PERSONNEL) sections before proceeding with clean-up. Use appropriate PERSONAL PROTECTIVE EQUIPMENT during clean-up.

Safeguards (Personnel) : Evacuate personnel, thoroughly ventilate area, use self-contained breathing apparatus. Use personal protective equipment.

Environmental precautions : Prevent material from entering sewers, waterways, or low areas.

4 / 13

Safety Data Sheet



Exirel® 100SE

Version 2.1

Revision Date 09/12/2016

Ref. 130000050443

- Spill Cleanup** : Soak up with sawdust, sand, oil dry or other absorbent material. Dispose of in an approved container. If liquid has been spilt in large quantities clean up promptly by scoop or vacuum.
- Accidental Release Measures** : Dispose of in accordance with local regulations.

SECTION 7. HANDLING AND STORAGE

- Handling (Personnel)** : Wash hands thoroughly with soap and water after handling and before eating, drinking, chewing gum, using tobacco, or using the toilet. Remove clothing/PPE immediately if material gets inside. Wash thoroughly and put on clean clothing.
- Handling (Physical Aspects)** : The product is not flammable.
- Dust explosion class** : No applicable data available.
- Storage** : Store product in original container only in a location inaccessible to children and pets. Do not contaminate water, other pesticides, fertilizer, food or feed in storage. Not for use or storage in or around the home. Keep out of the reach of children.
- Storage period** : No applicable data available.
- Storage temperature** : > 0 °C (> 32 °F)

SECTION 8. EXPOSURE CONTROLS/PERSONAL PROTECTION

- Engineering controls** : Information presented in Section 8 conforms to the requirements of the Occupational Safety and Health Administration (OSHA) Hazard Communication Standard of 2012. See Section 15 for applicable information conforming to the requirements of the Federal Insecticide Fungicide and Rodenticide Act (FIFRA), as required by the US Environmental Protection Agency (EPA), or by state Regulatory Agencies.
- Personal protective equipment**
Skin and body protection : Applicators and other handlers must wear:
Long sleeved shirt and long pants
Shoes plus socks
Chemical-resistant gloves, Category A (such as butyl rubber, natural rubber, neoprene rubber, or nitrile rubber), all greater than or equal to 14 mils

5 / 13

Safety Data Sheet



Exirel® 100SE

Version 2.1

Revision Date 09/12/2016

Ref. 130000050443

Applicators and other handlers of the diluted material must wear: shirt, pants, socks and shoes.
Personal protective equipment required for early entry:
Coveralls
Shoes plus socks
Chemical-resistant gloves, Category A (such as butyl rubber, natural rubber, neoprene rubber, or nitrile rubber), all greater than or equal to 14 mils

Protective measures

- Follow manufacturer's instructions for cleaning/maintaining PPE. If no such instructions for washables exist, use detergent and hot water. Keep and wash PPE separately from other laundry.

Exposure Guidelines Exposure Limit Values

Cyraniliprole			
AEL *	(DuPont)	3 mg/m3	8 hr. TWA
AEL *	(DuPont)	2 mg/m3	12 hr. TWA

Alkyl Sulfonate Salt
No applicable data available.

* AEL is DuPont's Acceptable Exposure Limit. Where governmentally imposed occupational exposure limits which are lower than the AEL are in effect, such limits shall take precedence.

SECTION 9. PHYSICAL AND CHEMICAL PROPERTIES

Appearance	
Physical state	liquid
Form	liquid
Color	off-white
Odor	mild, phenol-like
Odor threshold	No applicable data available.
pH	5.6 at 10 g/l

6 / 13

Part 4 MSDS/SDS Inserts

Western Region FRDs:

We want to see the MSDS/SDS at the end of Part 4.

**INSERT TEST SUBSTANCE
LABELS,
ADJUVANT LABELS,
CERTIFICATE(S) OF ANALYSIS,
MSDS/SDS (optional),
AND OTHER SUPPORTING
DOCUMENTS
AFTER THIS PAGE,
AND PAGINATE THEM WITHIN
PART 4.**

Preferred order of insertion*:
Test substance label
Adjuvant label
Test substance MSDS/SDS (optional)
Test substance shipping documents
Test substance COA(s)

*This is not a required order. If documents have been inserted in a different order and paginated, it is not necessary to re-arrange and re-paginate them.

PART 4 PAGE ____

Safety - PPE

Wear appropriate PPE

- When handling the TS (mixing)
- Entering the plot for 0 day PHI



Crop Destruct

Include the date of destruction

Must be sufficiently destroyed to ensure it won't be eaten by humans or animals (not just left on the tree or in the field)

PART 5. TRIAL SITE INFORMATION:

I. CROP DESTRUCTION

INSTRUCTIONS: Describe how the remaining crop (after the completion of this field trial) has been destroyed or handled in such a way that it is not consumed as a human food or animal feed. Include the date(s) of destruction or handling activities. If the (leftover) treated crop was not destroyed because the pesticide use in this trial is registered in your state or territory or province, then that should be indicated here:

On 10/2/17 I picked all remaining fruit in treated plot, then stepped on them. See photo next page.



Pomegranate fruit, Plot 02, after crop destruction. The shoe of destruction is shown at lower left.

ju 10/3/17

Part 5 Page 19

Field Data Book Part 8.A

FIELD ID NO: _____

IR-4 FIELD DATA BOOK

PART 8. RESIDUE SAMPLE SHIPPING

A. RESIDUE SAMPLE SHIPPING INFORMATION

INSTRUCTIONS: Complete this form for each sample shipment. Fax, mail, or email a true copy to the Study Director and to your Regional Field Coordinator (along with 8B). Retain the original in the Field Data Book.

WERE SAMPLES KEPT FROZEN¹ FROM
SAMPLE COLLECTION DATE TO SHIPMENT? (Check one) YES _____ NO _____

¹"Kept frozen" indicates storage at temperatures generally $<0^{\circ}\text{F}$ (-18°C).

IF NO, PLEASE EXPLAIN: _____

DATE/TIME RESIDUE SAMPLES PACKAGED: _____ TIME: _____ AM___ PM___ (Check one)

DATE/TIME RESIDUE SAMPLES RETURNED

TO FREEZER AFTER PACKAGING: _____ TIME: _____ AM___ PM___ NOT APPLICABLE___

DESCRIBE PROCEDURES UTILIZED TO PACKAGE SAMPLES:

Instructions: Fax, mail or email true copy of Parts 8A and 8B to Study Director and Regional Field Coordinator.

- Document notification in the FDB

When the Trial Doesn't Fit...

Calibrations and Verifications

- Chemigation trials
 - Verify output in drip lines
- Seed treatment trials
 - Calibration of planting equipment
 - Verification of final planting/seeding rate



When the Trial Doesn't Fit...

New for 2018

- Seed treatment specialized pages
 - Parts 4, 5, 6, 8
 - Additions to Part 7 included in all notebooks
- WR will include these in notebooks we send out

FIELD ID NO: _____

IR-4 FIELD DATA BOOK

PART 6. PLANTING RECORDS-SEED TREATMENT TRIALS

A. EQUIPMENT

INSTRUCTIONS: Complete a separate form for each piece of planting equipment used for planting seed in the trial.

EQUIPMENT USED FOR PLANTING _____

EQUIPMENT IDENTIFIER¹ _____
¹Each piece of equipment must have a unique identifying name or code

ANY OTHER EQUIPMENT EMPLOYED WITH THE PLANTER: (e.g., tractor) _____

NUMBER OF PASSES THAT ARE NEEDED TO PLANT THE PLOT _____

NUMBER OF HOPPER OUTLETS USED	
SPACING BETWEEN HOPPER OUTLETS	
DESCRIPTION OF PLANTER (HOPPER/DRILLS)[Please include a picture in Part 6B]	

PLANTED AREA (include units) _____


ABOVE DATA ENTERED BY: _____ DATE: _____

PART 6 PAGE ____ Trial Year 2018

Total number of pages in this section at initial pagination: ____

COMPLETE IF APPROPRIATE: "THIS IS A TRUE COPY OF THE ORIGINAL"
THE ORIGINAL IS IN IR-4 FIELD DATA BOOK NO. _____ INITIALS _____ DATE _____

Seed Treatment Pages



Google Custom Search

Home Food Crops Ornamental Horticulture Biopesticides & Organic Support Public Health International Activities Directory Outreach Materials Quality Assurance (QA)

Facilitating Registration of Sustainable Pest Management
Technology for Specialty Crops and Minor Uses

Please use the appropriate Field Data Book for the year of the trial that is being conducted.

Documents in PDF format:

2018 Field Data Book

- o 2018 Cover Page
- o Instructions & Changes
- o PART 1. Good Laboratory Practice Compliance Information
- o PART 2. Personnel Log
- o PART 3. Notes & Communication Log
- o PART 4. Test Substance Records
- o PART 4 Seed Treatment
- o PART 4 Green Page
- o PART 5. Trial Site Information
- o PART 5C. Alternate
- o PART 5 Seed Treatment
- o PART 6. Application Records
- o PART 6. Application Records-Airblast Sprayer
- o PART 6 Application Records- Greenhouse Trial
- o PART 6c Horizontal Calibration - 6 nozzle maximum
- o PART 6Calt_Horizontal Calibration w 5% ranges
- o PART6 GH w 5% range
- o PART 6 GH
- o PART 6 Seed Treatment
- o PART 7. Sample Collection and Storage
- o PART 8. Residue Sample Shipping
- o PART 8 Seed Treatment
- o PART 9. Weather and Irrigation Records

Update on Deviations

de·vi·a·tion

/dēvē'āSH(ə)n/

noun

the action of departing from the protocol

Good news: Marked improvement in explanations of what happened and why

Still need to work on timeliness

If you are aware it's a deviation, don't wait until it is noticed by QC or QA

Next Training Session

DATE: April - ish
TIME: 11:00 am – 12:00 pm PDT
AUDIENCE: All

Topic: TBD



Thank you for attending

Training documentation will be provided

Concerns, Questions, Feedback

Mika Tolson, Stephen Flanagan and Michael Horak

(530) 752-7635, 752-7634

wrfield@ucdavis.edu