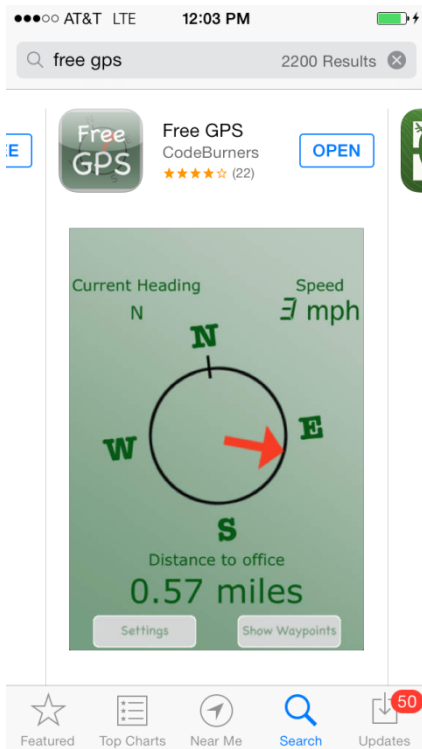


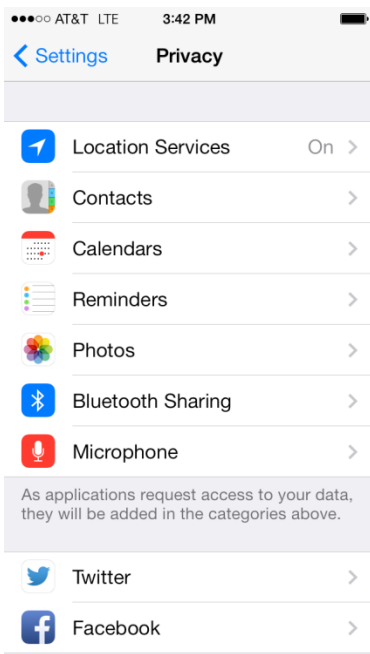
Using Your iPhone & Google Earth for Plot Mapping

1) Download & Install Google Earth on your desktop computer (it's free):(<http://www.google.com/earth/download/ge/agree.html>)

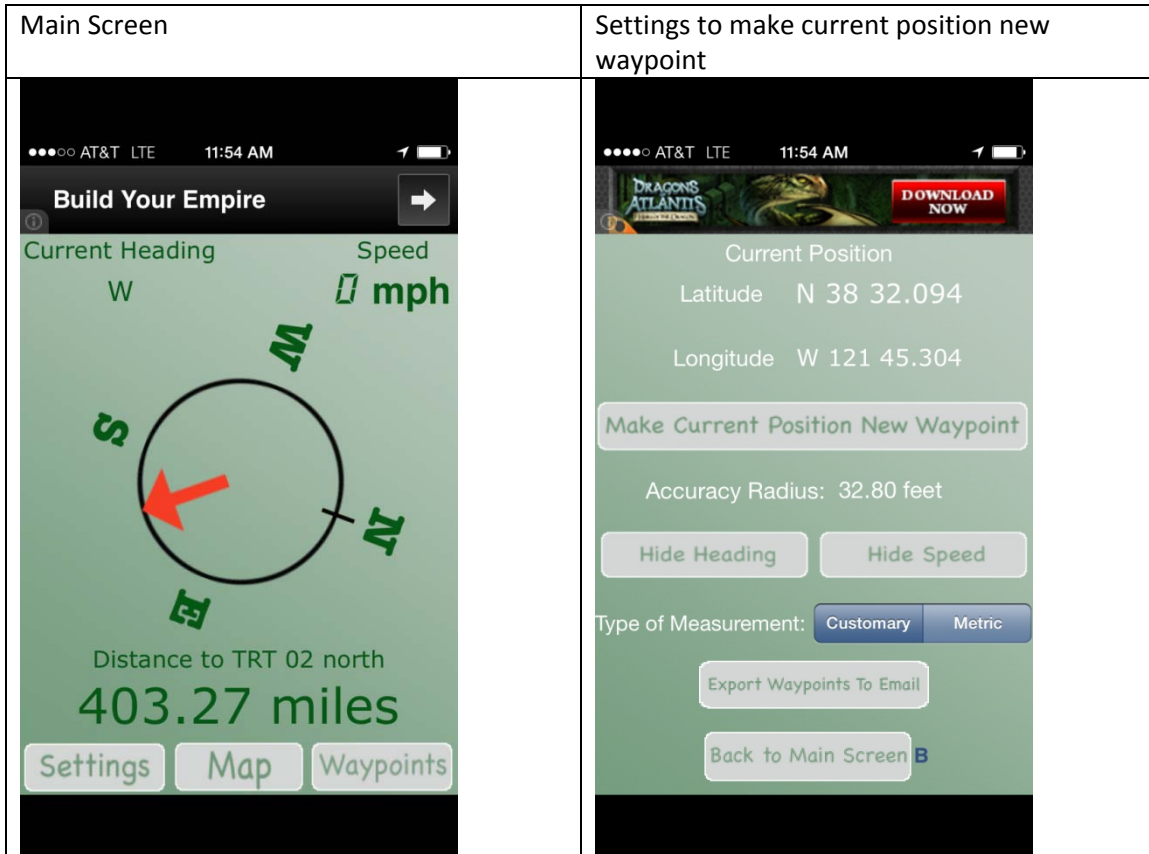
2) Go to the App Store on your phone & download Free GPS from CodeBurners (it's free too):



3) Check your phone settings & make sure Location Services is turned on (Settings->Privacy->Location Services). Also check that location services is turned on for Free GPS (Settings->Privacy->Location Services->Free GPS).



4) Start Free GPS on your phone & select settings to enter current position as new waypoint:




5) Stand right at your chosen permanent marked and enter a waypoint. Identify the point with something like Castroville Drip Valve.

6) Now export this point in kml format to yourself (export waypoints to email)



Drip Valve CASTROVILLE.kml

Stephen Flanagan <srflanagan@ucdavis.edu>

 You forwarded this message on 6/21/2013 2:46 PM.

Sent: Fri 6/21/2013 2:26 PM

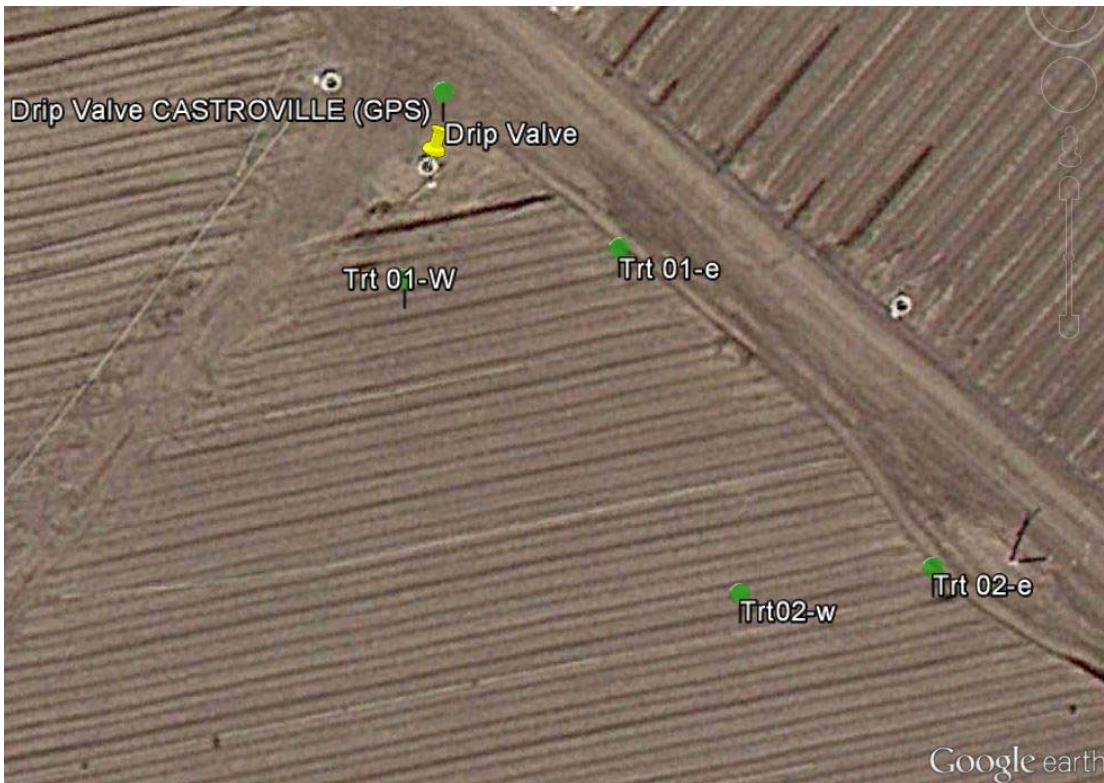
To: srflanagan@ucdavis.edu

 Message  Drip Valve CASTROVILLE.kml (6 KB)

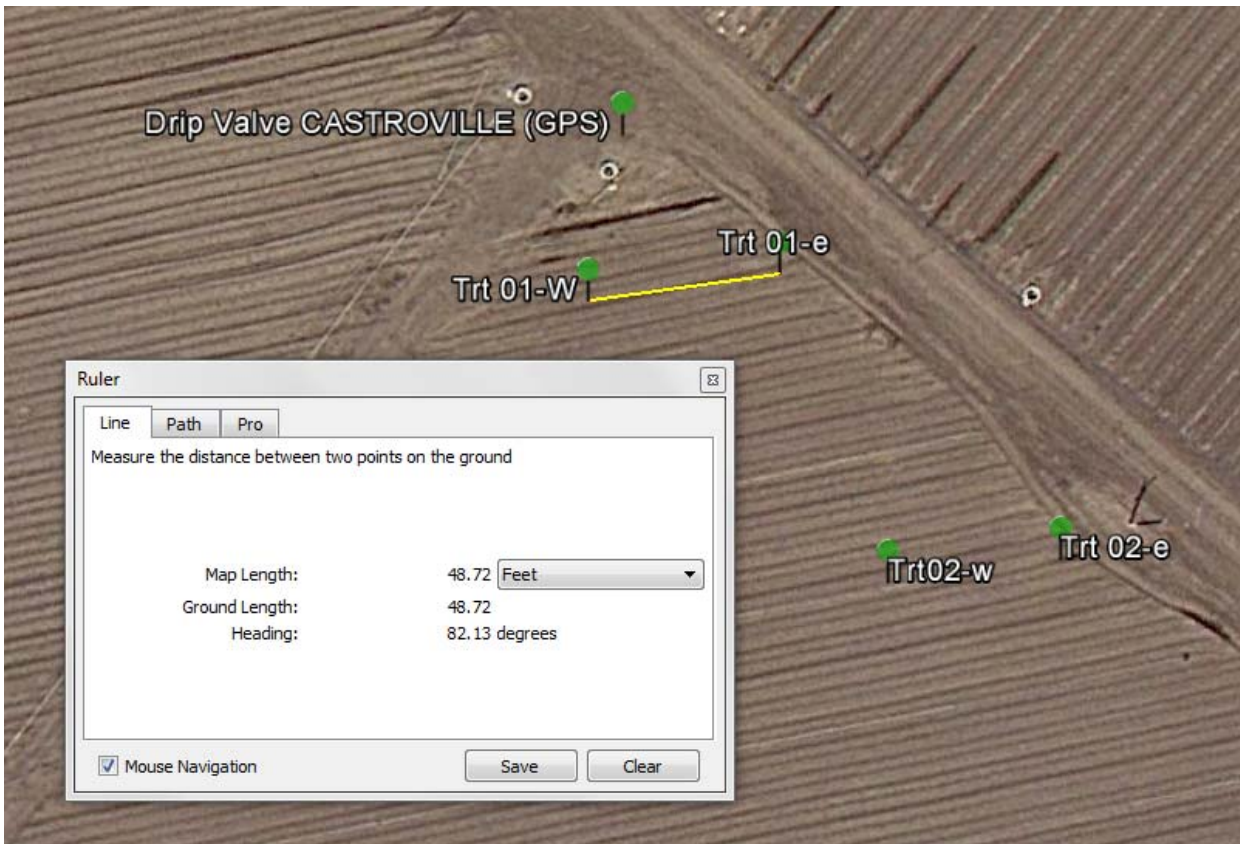
7) Now double click on the kml file and Google Earth will load & zoom to this point:



8) Repeat for your plot corner points:



9) Use the ruler tool to check your distances:



10) Use the drawing tools to finish out the map (Here is Bob Viales')

