



Using New Technologies for Plot Maps

- ❖ Smart Phone GPS

- ❖ Using Google Earth

- ❖ Integrating Phone-GPS & Google Earth into spiffy plot maps
 - ❖ 1st, verify permanent marker
 - ❖ 2nd, making cool maps

Using New Technologies for Plot Maps

- ❖ What's a smart phone?
 - ❖ Handheld computer
 - ❖ Camera
 - ❖ GPS
 - ❖ Oh yeah... and a phone

- ❖ What's an app?
 - ❖ e.g. GPS essentials, Free GPS, etc.



Remember your first phone? Cost? Features?



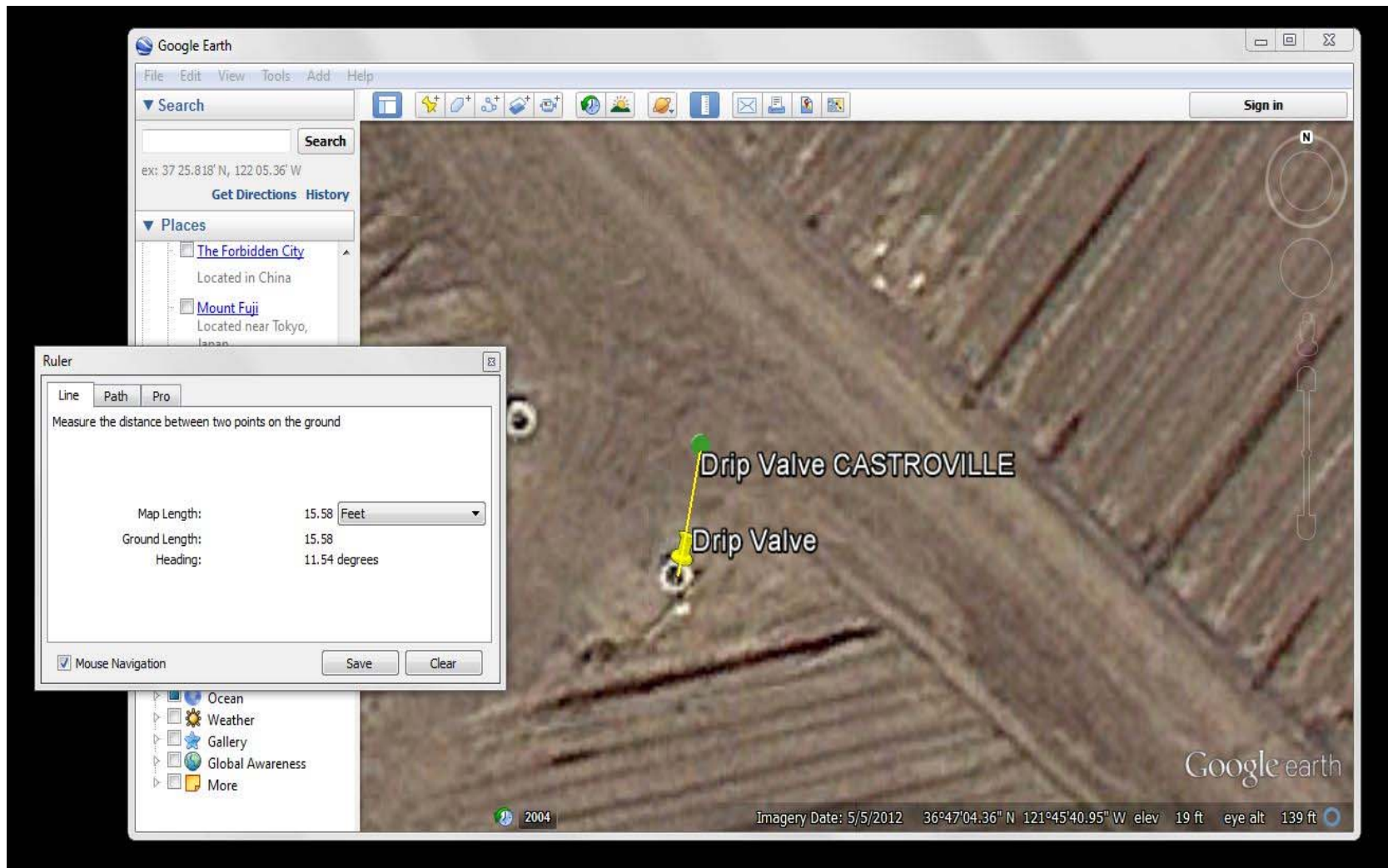
Mika's iPhone vs. Stephen's Android



Examples of where we're headed



2005: Using known benchmark to verify GPS

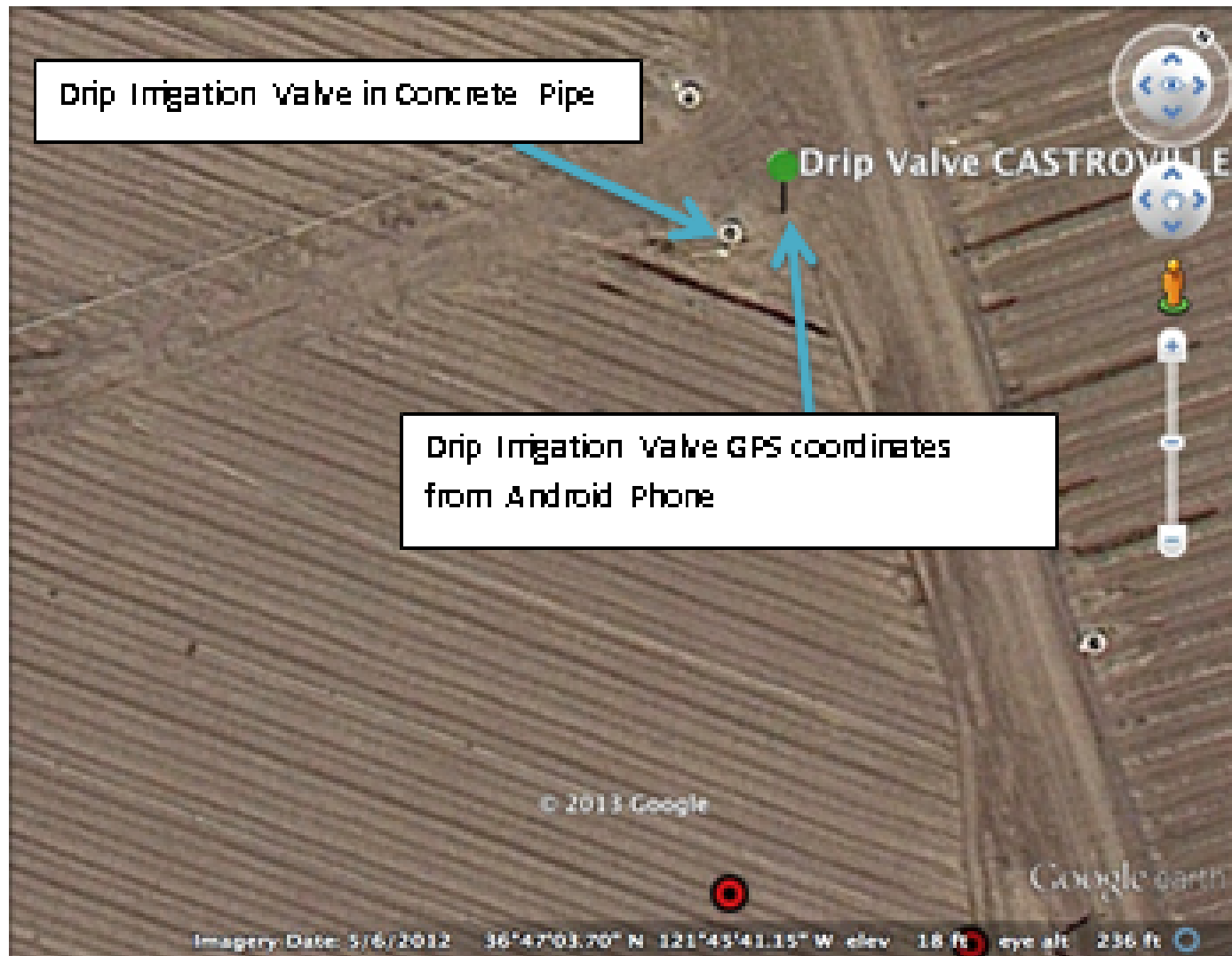


2013: Using visible landmark to verify GPS



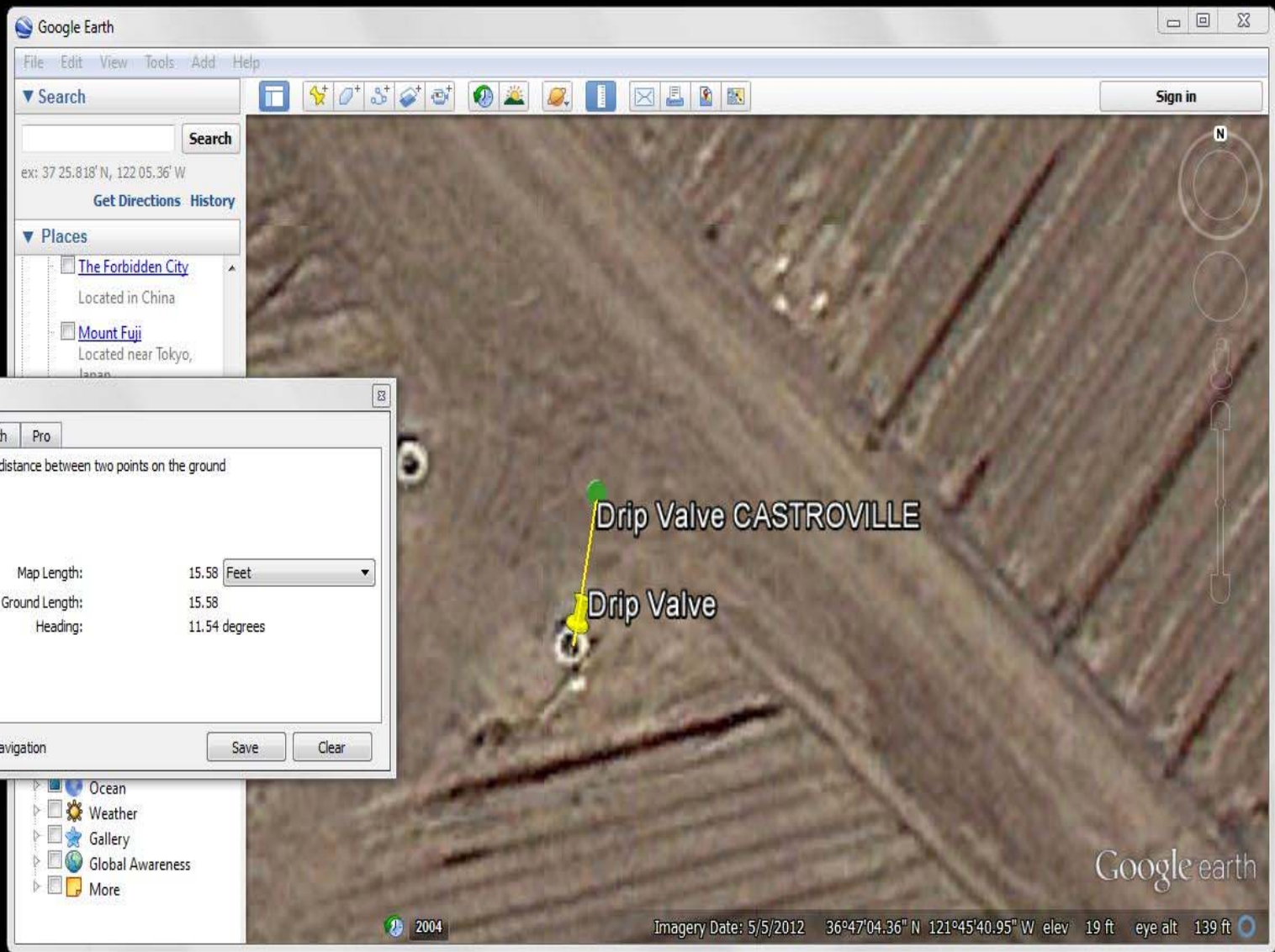
Permanent Marker verification w/ Smart Phone

- ❖ Download GPS app
 - ❖ Android: GPS Essentials
 - ❖ iOS: Free GPS (by CodeBurners)
- ❖ Download Google Earth
<http://www.google.com/earth/download/ge/agree.html>
- ❖ Turn on Phone's GPS function (Android) or Location Services (iPhone)
- ❖ Record point @ permanent marker
- ❖ Send GPS data (waypoint) to GE
- ❖ Use GE ruler tool to compare accuracy

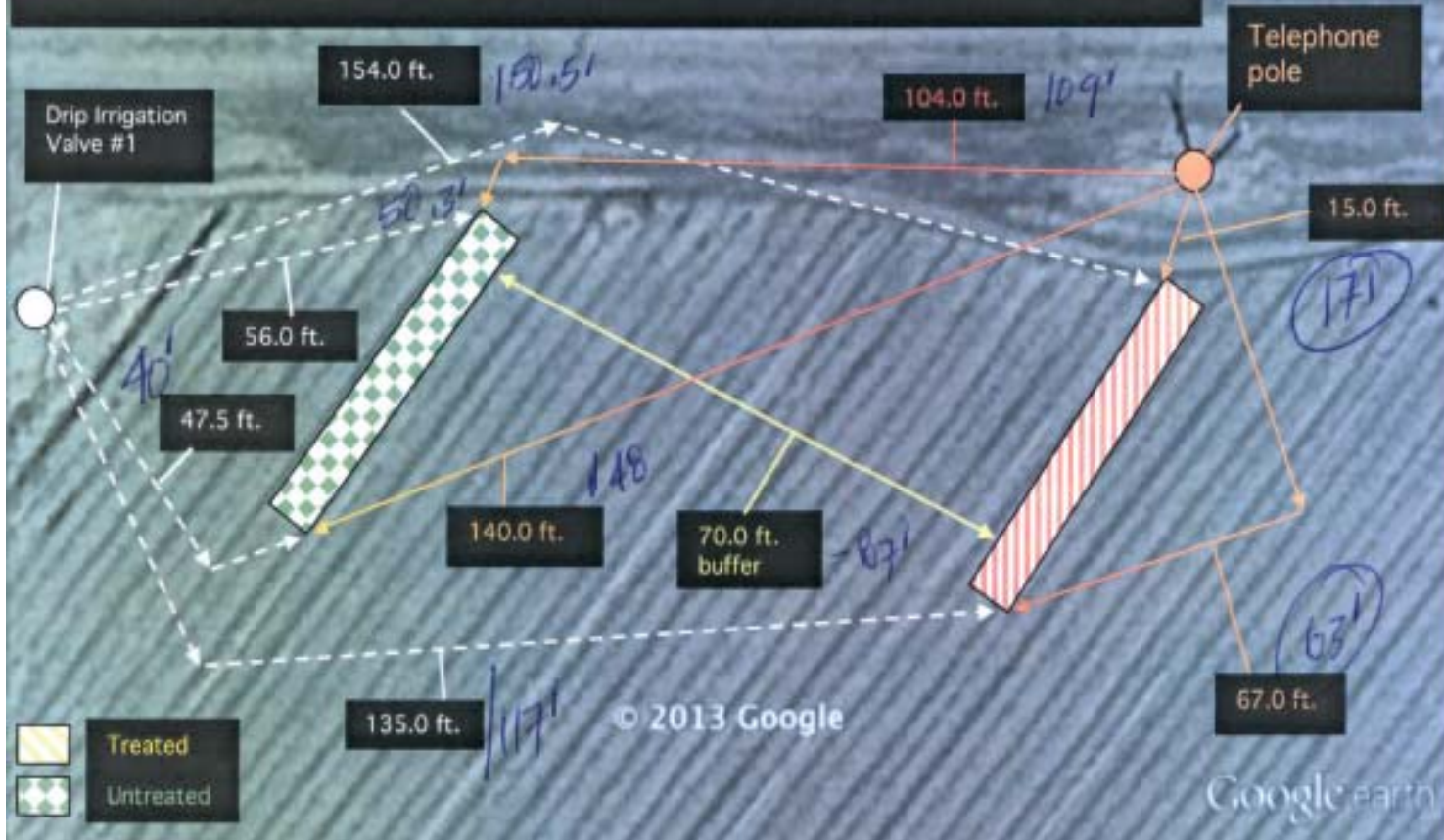


Coordinates of Valve from Google Earth: 36° 47' 4.24" Latt x 121° 45' 41.26" Long

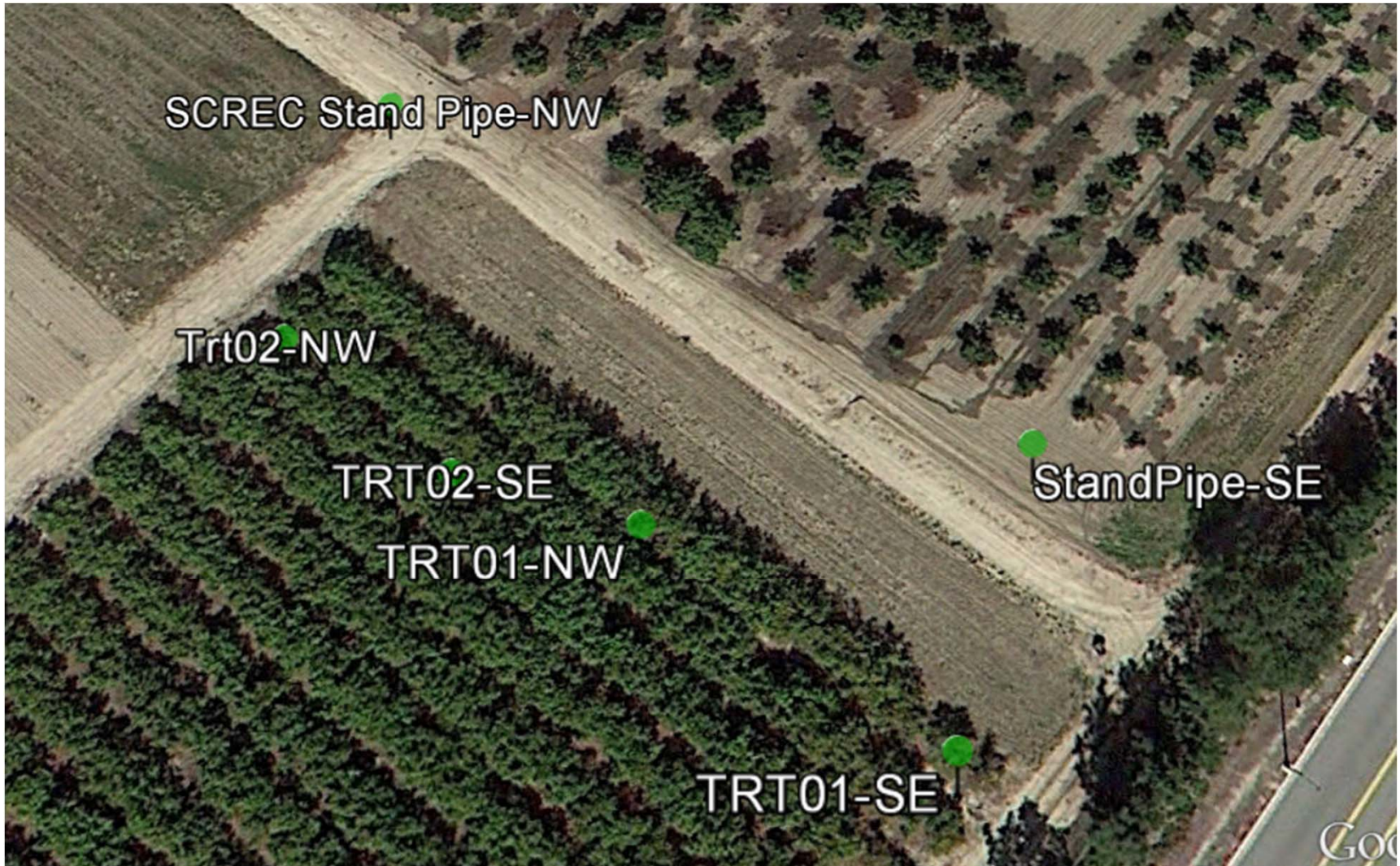
Coordinates of Valve from Samsung Phone: 36° 47' 3.36" Latt x 121° 45' 39.63" Long



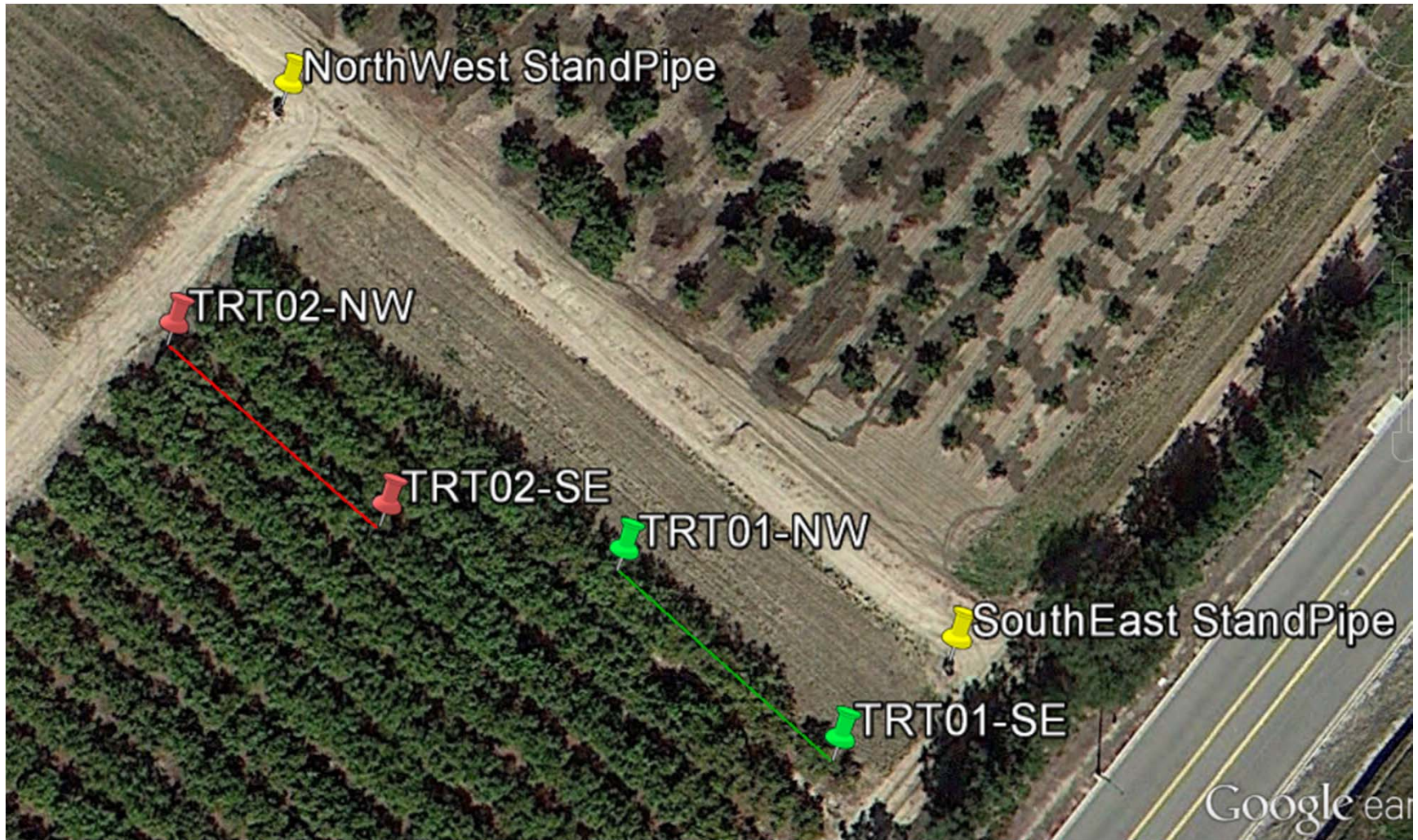
The untreated plot starts at the 5th row from Drip Irrigation Valve #1 in the north corner of Lot 14. Untreated and treated plots each contain 1 row (50.0 ft. long). Rows are on 6.67 ft. centers making each plot 50.0 ft. by 6.67 ft.. There is a 70.0 ft. buffer between treated and untreated plots. The treated plot starts at the 12th row SSE of the untreated plot. The plots are situated on level ground with the rows running NE/SW.



Map drawn by sight on GE, handwritten distances=compared to GPS readings



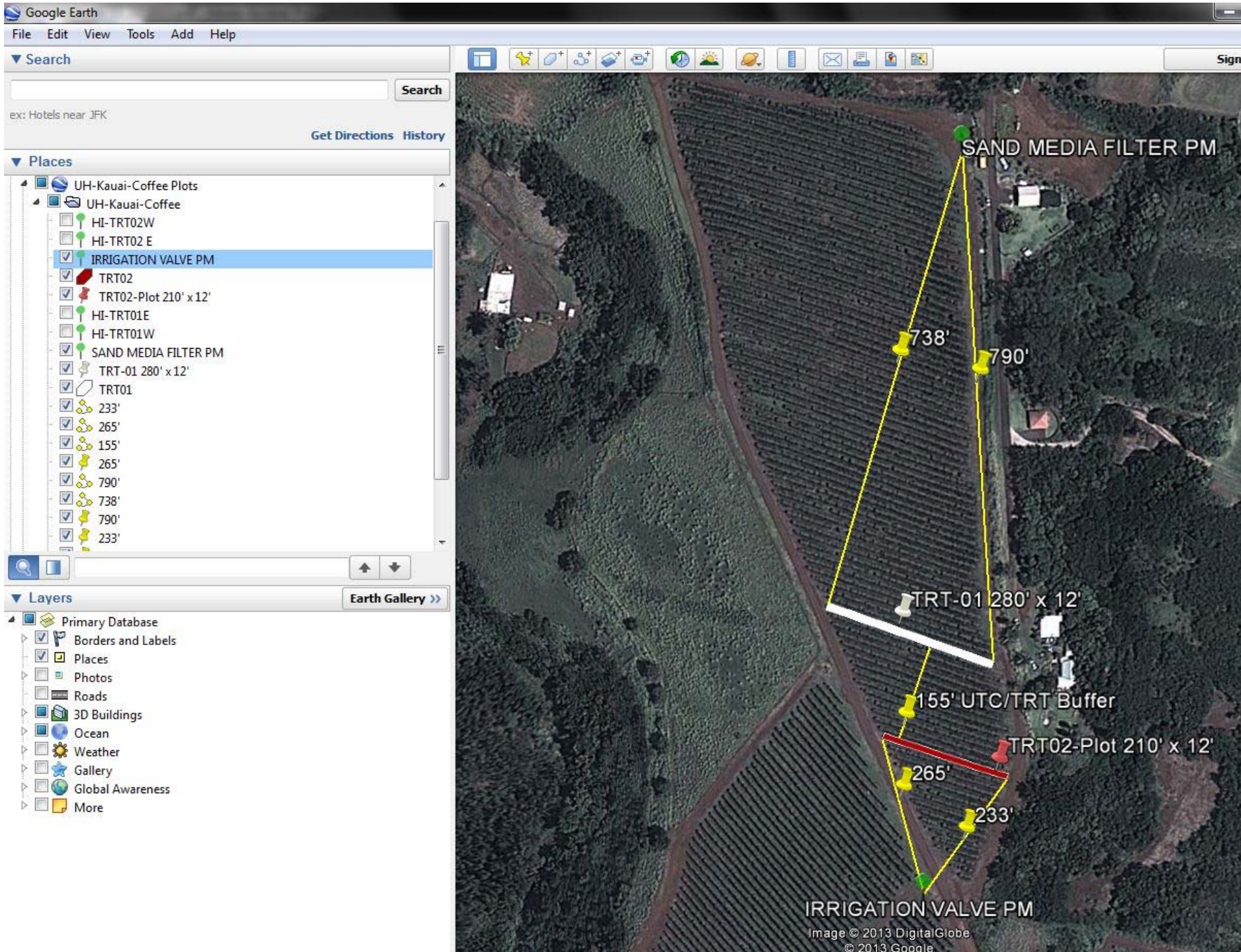
Raw GPS Waypoints

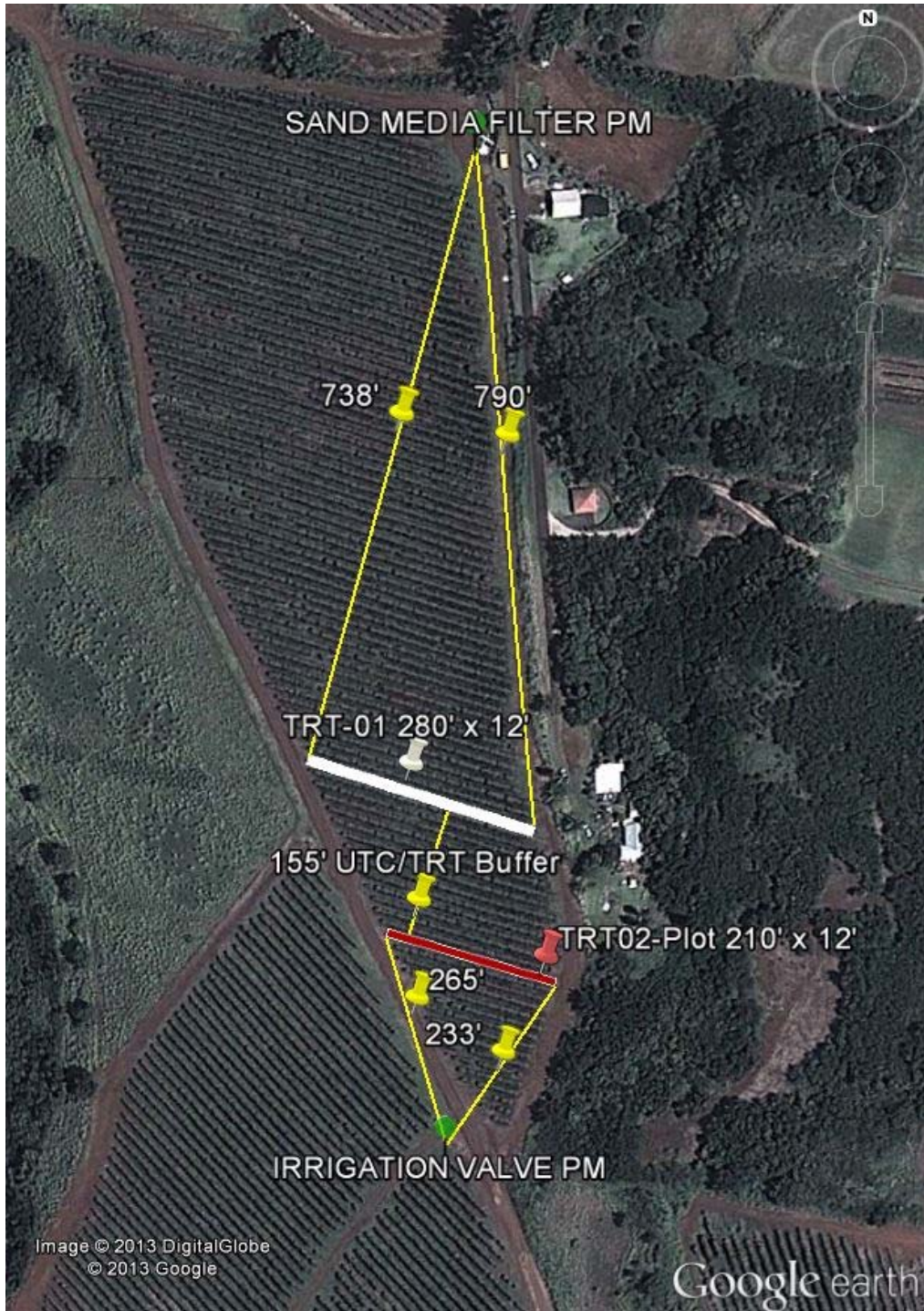


Corrected Plot & Permanent Marker Waypoints



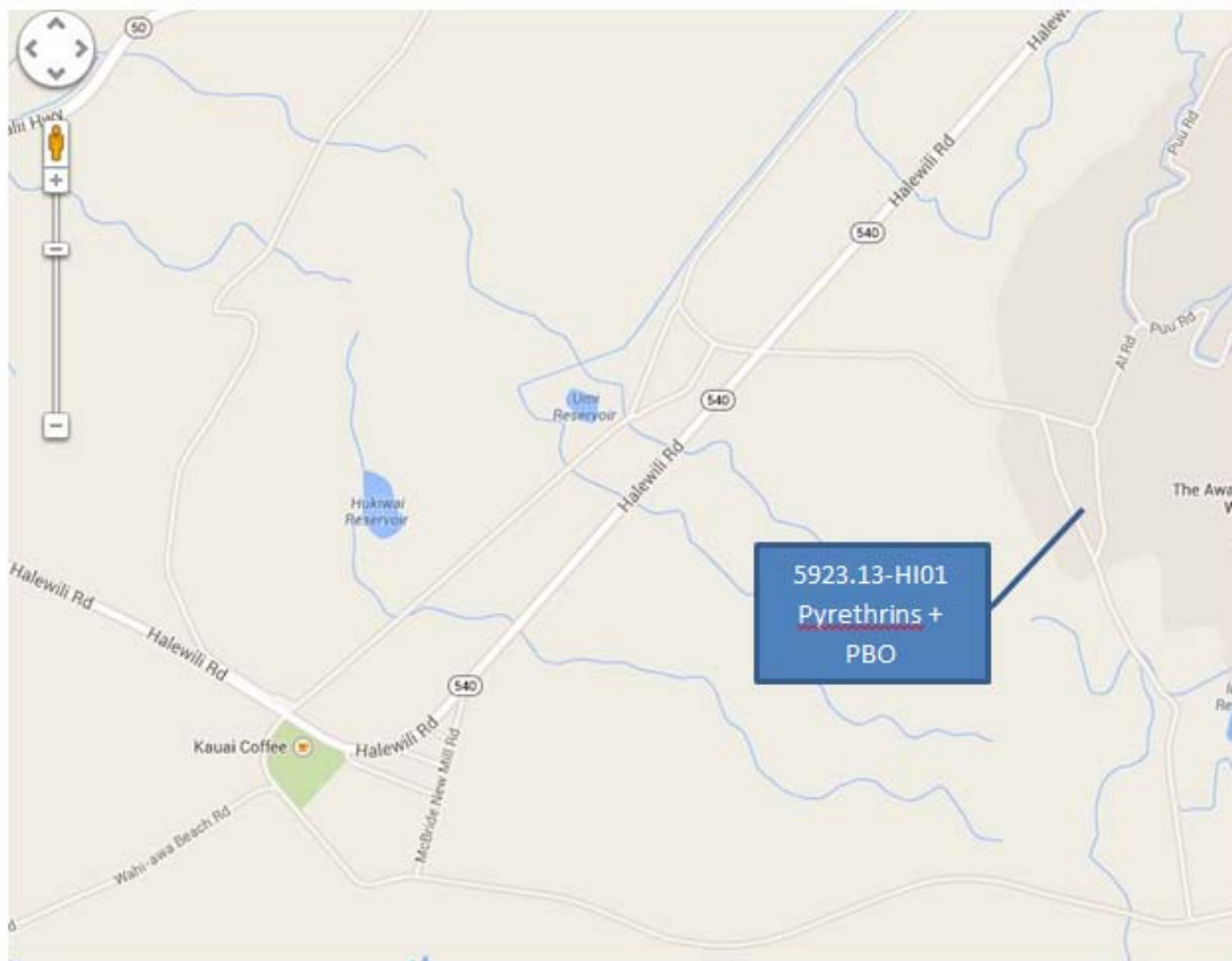
**Raw Phone GPS
data points imported
into Google Earth**





**Finished Plot map using
Google Earth drawing
tools & ruler tool**

Vicinity Map of Kauai Coffee Plot:



Permanent Marker/GPS Verification Log





Log showing accuracy on multiple days



Smart Phone/GPS Summary

- ❖ Update SOPs
- ❖ Verify Accuracy of GPS unit
- ❖ Use GPS waypoints or visible features to draw an accurate map
- ❖ Don't lose sight of map's purpose, i.e. that a reviewer (EPA) could reasonably relocate your plot.
- ❖ Check out the resources page for more details on these tools

